

# Your Smart Home Controller Data:

Device ID: SHC- \_\_\_\_\_

Remote Access ID: \_\_\_\_\_

IP Address: ☐ DHCP(Automatic) ☐ Static: \_\_\_\_\_

Administrator: Username: admin Password: \_\_\_\_\_

User 1: Username: \_\_\_\_\_ Password: \_\_\_\_\_

User 2: Username: \_\_\_\_\_ Password: \_\_\_\_\_

User 3: Username: \_\_\_\_\_ Password: \_\_\_\_\_

User 4: Username: \_\_\_\_\_ Password: \_\_\_\_\_

This product uses third party software. Information can be found via the web interfaces.  
 This product includes software developed by Winning Strategies, Inc.  
 This product includes software developed by the University of California, Berkeley and its contributors.  
 This product includes software developed by Niels Provos.  
 This product includes software developed for the NetBSD Project. See <http://www.netbsd.org/> for information about NetBSD.  
 This product includes software developed by the OpenSSL Project for use in the OpenSSL Toolkit. (<http://www.openssl.org/>)  
 This product includes software written by Eric Young ([eev@cryptsoft.com](mailto:eev@cryptsoft.com))  
 This product includes software developed by Trimble Navigation, Ltd.  
 This product includes software developed by Powerdog Industries.

## EU xComfort CHCA-00/01

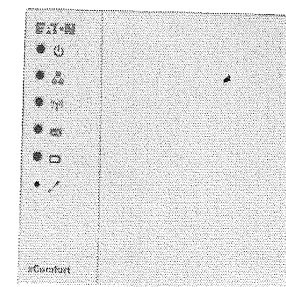
Assembly instructions  
 Montageanweisung  
 Instructions de montage  
 Montážní návod  
 Montážní návod  
 Montagevejledning  
 Instrucciones de montaje  
 Szerelési utasítás  
 Istruzioni di montaggio  
 Montasje anvisning  
 Montage instructie  
 Instruções de montagem  
 Instrukcja montażu  
 Montageanvisning  
 Asennusohjeet  
 Montaj talimatı  
 Instrucțiuni de montaj  
 Инструкция по монтажу  
 οδηγία συναρμολόγησης  
 安装说明书  
 تعليمات التركيب



Danger  
 Lebensgefahr  
 Danger de mort  
 Nebezpečí  
 Nebezpečenstvo  
 Fare  
 Peligro  
 Életveszély  
 Pericolo di morte  
 Fare  
 Levensgevaar  
 Perigo  
 Niebezpieczeństwo  
 Varning  
 Vaara  
 Hayati Tehlike  
 Pericol  
 Опасность  
 κίνδυνος θανάτου  
 危险  
 خطر على الحياة



Installation by electricians only  
 Montage nur durch Elektrofachkräfte  
 Montage uniquement par un électricien  
 Montáž pouze osobami s elektrotechnickou kvalifikací  
 Montáž iba osobami s elektrotechnickou kvalifikáciou  
 Må kun installeres af en aut. el-installatør  
 Debe ser instalado por un profesional eléctrico  
 Csak szakképzett személy szerelheti  
 Montaggio esclusivamente ad opera di personale specializzato  
 Må monteres av autorisert installatør Gr.L  
 Montage alleen door elektromonteurs  
 Deve ser instalado por um profissional  
 Montaj tylko przez uprawnionych instalatorów  
 Får endast utföras av behörig elektriker  
 Asennus vain sähköasentajan toimesta  
 Sadece uzman kişiler monte edebilir  
 Instalare numai de către electricieni  
 Монтаж может производить только электрики  
 Εγκατάσταση μόνο από ηλεκτρολόγους  
 仅允许合格电气技师进行安装  
 التركيب فقط من قبل صال كهرباء مختصين



Eaton Industries (Austria) GmbH  
 Eugenia 1  
 A-3943 Schrems

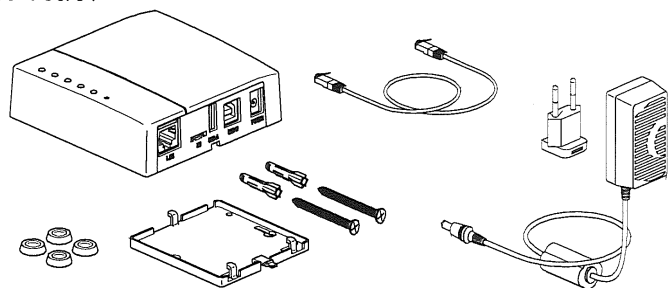
Phone: +43 (0) 50868-702-0\*  
[www.eaton.eu](http://www.eaton.eu)

## Scope of delivery:

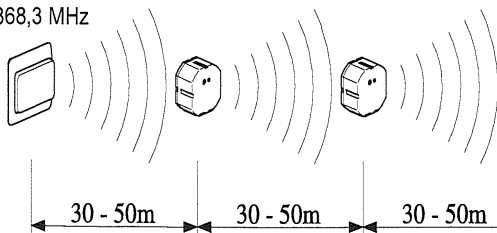
1x Smart Home Controller, 1x Power Supply, 1x LAN-Cable, 1x Wall Mounting Plate, 2x Screws & 2x Dowels, 4x Adhesive Rubber Feet, 1x Mounting Instruction + Correct Use of xComfort

CHCA-00/01

CMMZ-00/37



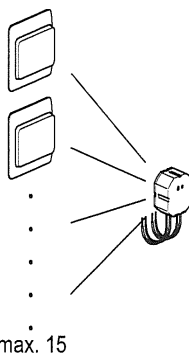
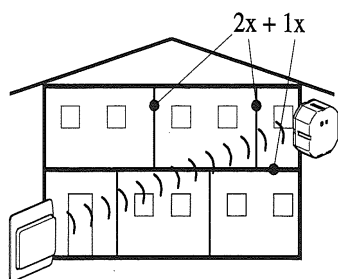
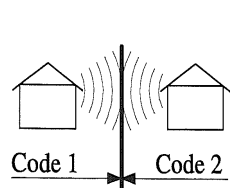
868,3 MHz



IP20

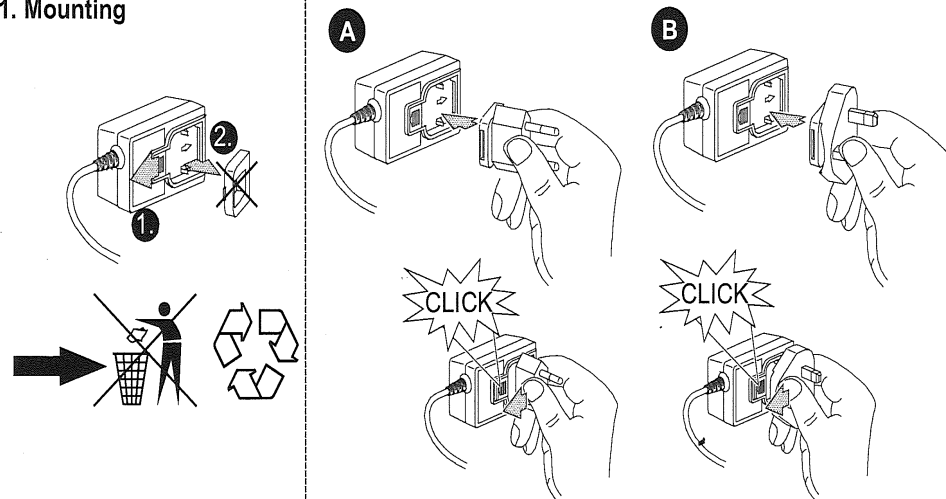


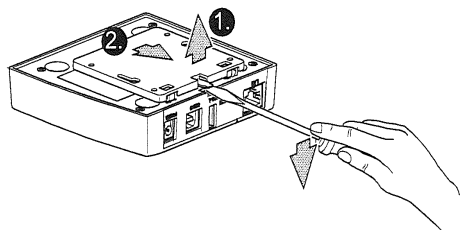
MRF E.ON	Min. Version 2.19
	T=-25°C - +70°C
	T=+5°C - +45°C



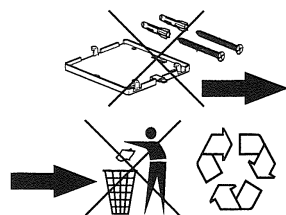
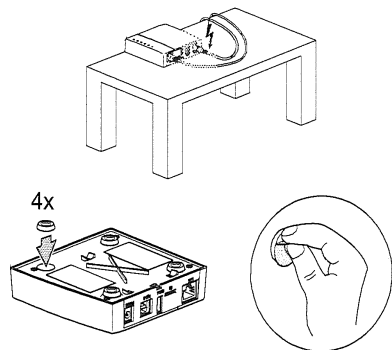
ca. 60-90%	ca. 80-95%	ca. 20-60%	ca. 0-10%	ca. 70-90%

## 1. Mounting

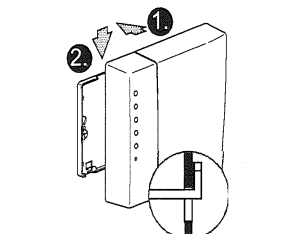
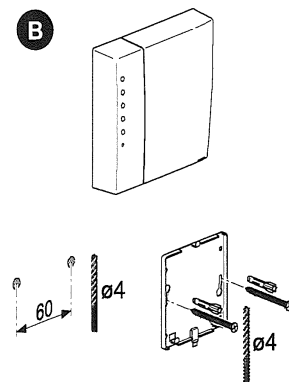




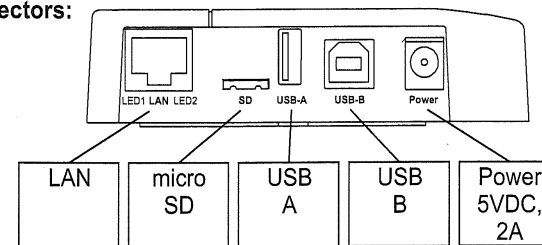
A



B

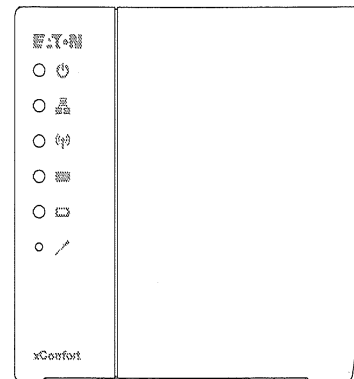


## Connectors:



Connectors	Functionality
LAN	Ethernet Communication
micro SD	System Rescue Boot Recovery
USB A	reserved
USB B	reserved
Power	Power supply

## Functions:

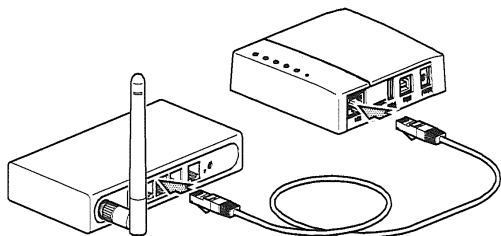


LAN LED		
	OFF	ON
LED1		valid Link
LED2	100Mbit	10Mbit

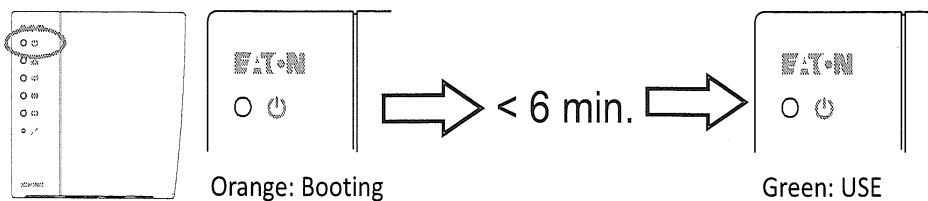
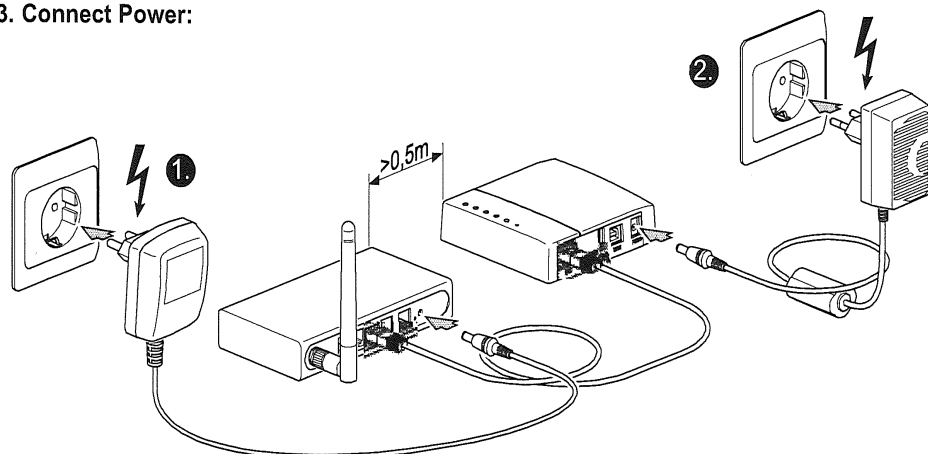
Symbol	LED	Function
	Power	Green: Power ON, USE Orange: Booting
	Network connection	Red: No Internet Orange: Internet connection Green: Remote Server Connection
	RF Traffic	Green: RF traffic
	System Message	Yellow: Message in the Mailbox
	Battery status (assigned sensors)	Green: All batteries OK Yellow : At least one battery is weak Red: One is very weak or empty
Symbol	Button	Function
	Recovery	No RF programming functionality! 1. Restore default admin password and network settings to DHCP: Press button for 15 seconds (power LED flashes green and will finally change to orange), system will reboot. 2. Complete Recovery, software & default settings being copied from SD card. Please backup your settings as they will be lost during recovery process. Disconnect the power supply, insert the EATON microSD card, during reconnecting the power supply - keep the button pressed for ~ 3 sec till the power LED switches from orange to red. The flashing red power LED indicates the update process. Make sure the power supply is not disconnected and the sd card is not removed. System will reboot when finished. In case of a failed recovery process, all LEDs will flash red and please contact your Eaton support contact person.
MRF	Icon	Function
	Double Click on Icon in MRF	Ident Smart Home Controller <<>> Green Blinking 30s (Ident)

>MRF2.19

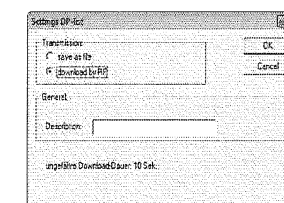
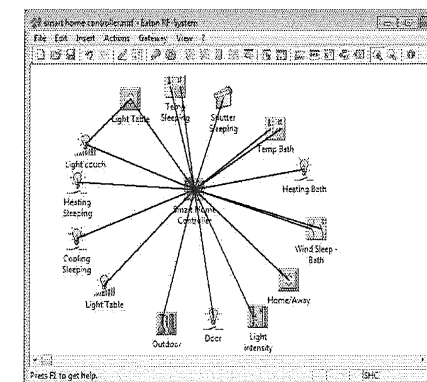
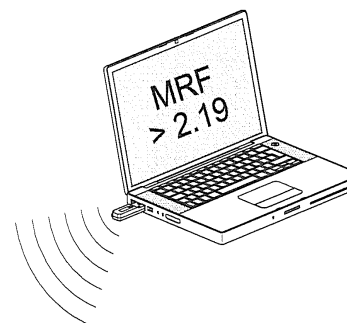
## 2. Connect Router: IP address: is assigned via DHCP automatically



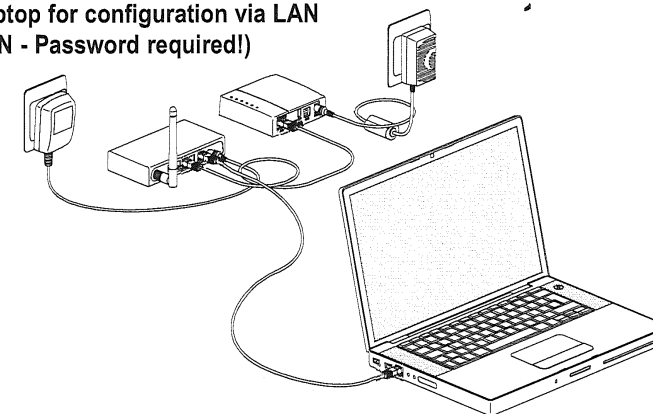
## 3. Connect Power:



## 5. Configure RF Network (xcomfort)



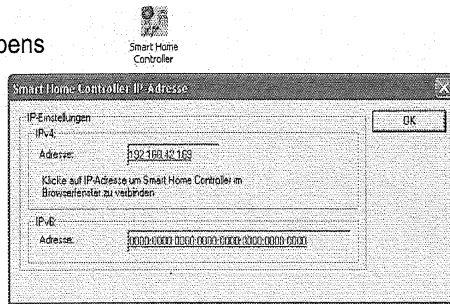
## 6. Connect Laptop for configuration via LAN (optional WLAN - Password required!)



## 7. Connect to Smart Home Controller

### 7.A. Check IP-Address in

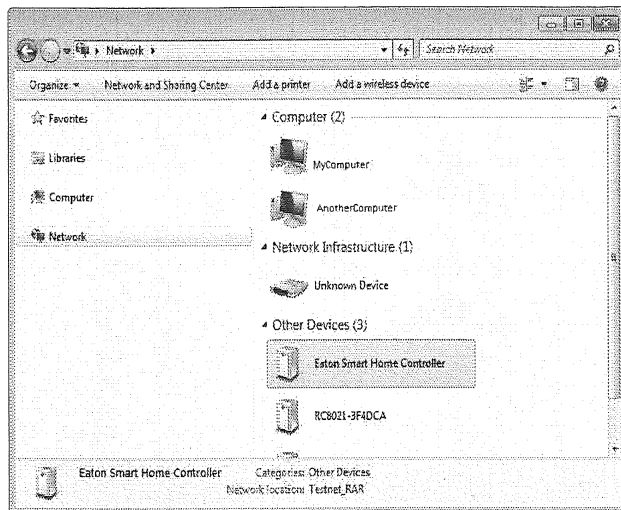
MRF & Click on it => Browser opens



### 7.B. 7.B Discovery in Windows

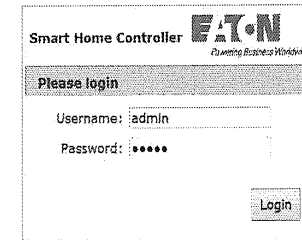
1. Open Windows Explorer and click on "Network"

2. UPnP Devices will appear on right side of window



3. Double click on "Eaton Smart Home Controller"

4. The Browser opens and shows the login page



Default login settings:

User: admin

Password: admin

5. Login with Username and Password

### 7.C. Discovery in Mac OS

1. Open: Safari

2. Click the Bookmark icon:

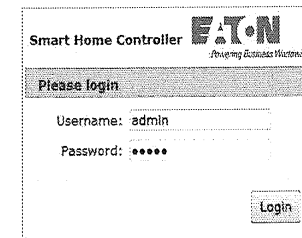


3. Select Bonjour:



4. Double click Bookmark: Smart Home Controller

5. The browser opens and shows the login page:



Default login settings:

User: admin

Password: admin

6. Login with Username and Password

### 8. Smart Home Controller Configuration

Step 1: Activate Remote Access (System => Remote)

Step 2: Update Smart Home Controller to latest Software before configuration (System => Firmware)

Step 3: Start configuration after update has been completed

Please read the Smart Home Controller help documentation for further configuration steps.

**DECLARATION OF CONFORMITY**

**EATON**

We, **EATON Industries (Austria) GmbH**  
3943 Schrems, Eugenia 1  
Austria

declare that product (family)

**Eaton - Smart Home Controller,  
CHCA-00/01 (contains RF-Modul CSCZ-01/xx)**

(the declaration of conformity applies to all  
listed types within our actual product catalog)

provided that it is installed, maintained and used in the  
application intended for, with respect to the relevant manufacturers  
instructions, installation standards and "good engineering practices"

complies with the provisions of Council directive(s):

EMC Directive 2004/108/EC

based on compliance with European standard(s):

EN55022/10, EN55024/10, EN60950-1/06 + A11/09 + A1/10

covered by RF-Modul CSCZ-01/xx: EN301489-3 V1.4.1, EN300220-2 V2.3.1,  
EN50491-5-1/10, EN50491-5-2/10, EN 62479/10

11.01.2013

Heinz Ursprunger  
Director Product Line  
& Marketing Management

Friedrich Schröder  
Director Quality  
& EHS

Affixing date of CE mark: 2013

Doc.Id.: CHCA-00/01 (contains RF-Modul CSCZ-01/xx)

**GB Important notes on the correct use of xComfort products**

**General information, use:**

xComfort products are designed for use in private homes and similar, fixed electrical installation systems. Applicable standards can be found in the CE declarations of conformity included in the mounting instructions supplied with each product.

**Installation:**

- Installation and connection of xComfort products may be carried out by an authorized specialist only (e.g. electrician).
- Eaton installation recommendations need to be respected, in addition to all relevant national installation and construction regulations.
- Appropriate fuse protection with overvoltage protection in the distribution cabinet is required (coarse protection and surge protection).
- Overvoltage in the system network caused by other electrical consumers (e.g. switching of loads) is not allowed, filters need to be provided.
- Data transmission in the system network used (e.g. ripple control signals from the electricity supplier) and harmonics are not allowed, filters need to be provided.
- Temporary, short brightness variations of dimmed lamps are usually caused by the above-mentioned ripple control signals, they are not caused by any defect of our devices.
- Ambient conditions and technical data as specified in our catalogues or mounting instructions need to be respected, especially those referring to:
  - Degree of protection (IP20) for in-house use
  - Degree of pollution
  - Ambient temperature
  - Humidity (non-condensing)
  - Operating temperature (also taking account of other, additional heat sources)
  - Operating voltage and frequency
  - Correct and allowed max. load
  - De-rating (reduction of performance)
- The mains power supply needs to be disconnected before doing any installation jobs.
- Mechanically and/or electrically damaged xComfort devices **MUST NOT** be installed or brought into operation. They need to be replaced by new xComfort devices.
- xComfort devices **MUST NOT** be exposed to any mechanical stress (e.g. mechanical pres-

sure on the devices or strain on connection wires).

- xComfort devices MUST NOT be changed, neither in technical, mechanical and/or electrical terms. Exception: Shortening of connection wires.
- Devices must not be opened.
- xComfort devices must be and stay accessible for programming, replacement and maintenance purposes (i.e. NO wall-paper on distribution boxes, NO immuring etc).
- Torques for screw-type terminals on the device need to be respected! For terminals from third-party suppliers (e.g. lustre terminals) you need to respect the manufacturers' technical data.
- Once the job has been done, all the installation boxes need to be closed again. All live components need to be touch-proof.
- Installation boxes and distributors must be flame-retardant in compliance with the respective rules and regulations.
- Neutral conductor displacements in the system network used are NOT allowed and can destroy/damage the devices.
- Phase and neutral conductor need to be correctly connected.
- Protective earth PE needs to be provided where required by terminal equipment (e.g. lamp with a metal housing).
- After removing any xComfort actuators, the incoming capacitor of the actuators needs to be discharged (risk of electric shock).
- Connecting the sensors and loads or consumers has to be done in accordance with the technical section of our catalogue or with the mounting instructions supplied with each product. All technical data and recommendations need to be respected.
- Any connection wires not used must be touch-proof.
- Country-specific waste disposal and environmental regulations (e.g. for defective devices, batteries, ...) need to be respected.

#### Applications:

- xComfort products MUST NOT be used for safety installations and safety-relevant functions, especially for:
  - Safety temperature switches and limiting equipment of heating systems
  - Final position detection and switch-off or safety functions related to the influence of the weather on shading systems (wind,rain,hail ...)
  - Safety and EMERGENCY STOP functions in general
  - Conventional fire alarm systems

- Conventional alarm systems/installations
- Etc.

#### Miscellaneous:

- Participation in an Eaton xComfort training is a pre-requisite for specialists who are to install xComfort products.
- In case of any doubt, missing information or incomplete technical data, contact Eaton before starting the installation job.
- Service life specifications (e.g. for batteries of push-buttons or for relays of actuators) are approximate values only. Their real service life may vary depending on the different applications, but this is not due to a deficiency of our xComfort devices.
- If you have any questions, suggestions or complaints, please get in touch with your Eaton contact or with your Eaton installation or sales representative.
- Any loss or deterioration of the wireless connection due to external influences (e.g. changes in the building, impact of other systems, influence of the weather, e.g. of rain on wireless routes in outdoor areas...) is not within Eaton's responsibility.
- For safety reasons you need to provide a system password upon start-up of the xComfort system. However, a 100% protection is impossible. Therefore, Eaton cannot be held liable for any manipulations by third parties.
- For combinations of xComfort devices with third-party products (e.g. ballasts, electr. transformers) Eaton cannot guarantee the compatibility of the devices due to the wide range of different products on the market.
- Eaton shall not assume any responsibility for technical changes, errors and misprints.

#### Guarantee/Warranty:

- In case of a failure to comply with the instructions or in case of inappropriate use, any warranty or guarantee claims will cease to exist and are therefore NOT in Eaton's responsibility.
- In case of any installation mistakes and consequential damages, e.g. short-circuits, Eaton shall NOT accept any liability.
- Nor shall EATON accept any liability, neither direct nor indirect, for the functioning of systems/applications that have been started up or configured and/or programmed by any third party.